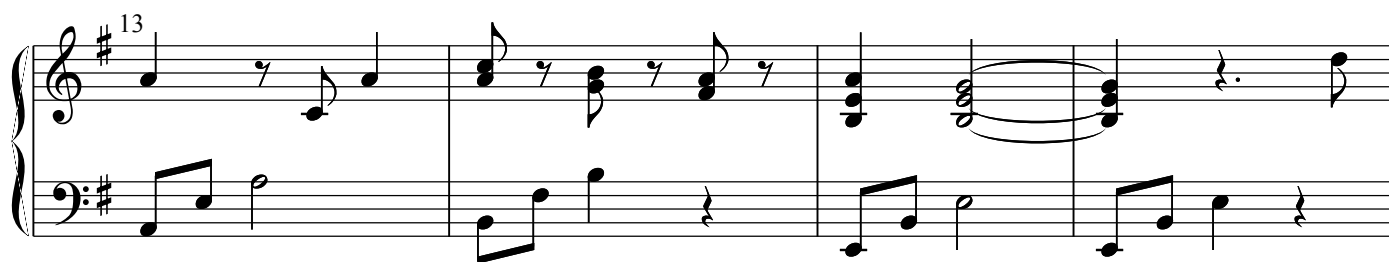
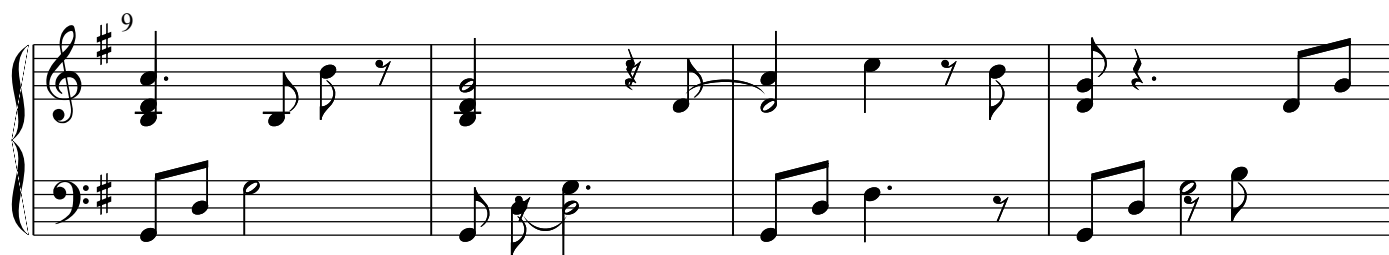


# Hepatica#2



21

Measures 21-24 of a musical score in G major. Measure 21: Treble clef has a dotted quarter chord (G4, B4) and an eighth rest; Bass clef has a quarter note G2. Measure 22: Treble clef has a dotted quarter chord (A4, C#5) and an eighth rest; Bass clef has a quarter note A2. Measure 23: Treble clef has a quarter chord (B4, D5) and a quarter rest; Bass clef has a quarter note B2. Measure 24: Treble clef has a whole rest and an eighth rest; Bass clef has a quarter note C3.

25

Measures 25-28 of a musical score in G major. Measure 25: Treble clef has a quarter note G4, a quarter note A4, and a half rest; Bass clef has a quarter note D2. Measure 26: Treble clef has a whole rest; Bass clef has a quarter note E2. Measure 27: Treble clef has a quarter note G4, a quarter note A4, and a quarter note B4; Bass clef has a quarter note F#2. Measure 28: Treble clef has a dotted quarter chord (G4, B4) and an eighth rest; Bass clef has a quarter note G2.

29

Measures 29-33 of a musical score in G major. Measure 29: Treble clef has a dotted quarter chord (G4, B4) and an eighth rest; Bass clef has a quarter note A2. Measure 30: Treble clef has a dotted quarter chord (A4, C#5) and an eighth rest; Bass clef has a quarter note B2. Measure 31: Treble clef has a quarter chord (B4, D5) and a quarter rest; Bass clef has a quarter note C3. Measure 32: Treble clef has a quarter note G4, a quarter note A4, and a quarter note B4; Bass clef has a quarter note D2. Measure 33: Treble clef has a quarter chord (G4, B4) and a quarter rest; Bass clef has a half note E2. The system ends with a double bar line.

34

Measures 34-36 of a musical score in G major. The staves are empty, with a double bar line at the end of measure 36.

37

Measures 37-39 of a musical score in G major. The staves are empty.